

MANAGE THE ENTIRE TEST PROCESS WITH A SINGLE, POWERFUL SOLUTION

Borland® SilkCentral® Test Manager™ is the only solution you need to manage all aspects of the application testing process—from establishing testing requirements aligned with end-user needs and specifications, to planning, scheduling and executing tests in physical or virtual test labs— to tracking and resolving issues. You can centrally manage all test types—from development stage unit tests to final user acceptance tests, and provide role-based access to all application requirements, specifications, test plans, quality metrics, test results and reports. Meanwhile, a Web portal provides anytime, anywhere access to comprehensive project information through a number of highly informative standard or customized views powered by one of the industry's most versatile open-source reporting engines. As a result, SilkCentral Test Manager promotes collaboration among quality assurance, development and line-of-business managers; improves quality by providing clear visibility into the testing process; and creates new efficiencies that shorten release cycles and raise the bar for software quality.

FEATURES AND BENEFITS

WEB-BASED QUALITY REPORTING AND DECISION SUPPORT

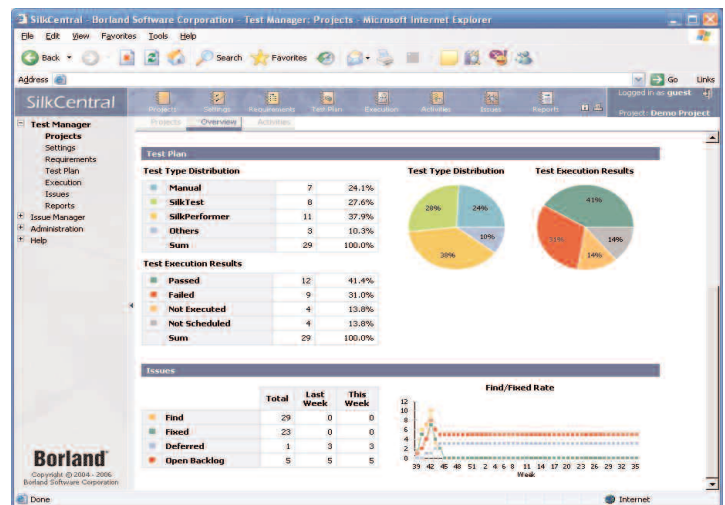
SilkCentral Test Manager provides stakeholders in the software delivery cycle with Web-based access to the project-related information they need, when they need it. Management gains high-level visibility into the testing process and progress against the overall plan, and test teams and developers can view in-depth reports containing granular-level detail. To help determine the impact of proposed changes, top-down views reflect the relationship between requirements and tests. From the bottom up, SilkCentral Test Manager can establish relationships between code and related tests using code-coverage technology. Choose from an array of built-in reports covering the entire testing process—or create custom reports to meet specific reporting needs using the included open-source Business Intelligence and Reporting Tools (BIRT).

TEST REQUIREMENTS MANAGEMENT

The test requirements module in SilkCentral Test Manager drives the focus of testing projects to assure that test plans align with core project objectives. Test requirements—created directly inside the interface or imported from other sources—are managed in a centrally managed repository where associations between test plans and tests are established with the ease of drag-and-drop functionality. Highly effective in a stand-alone mode, this module's value expands with automatic test case generation, traceability, synchronization provided by integration with Borland's Caliber® DefineIT™ and CaliberRM™ solutions for requirements management. Similar integration between SilkCentral Test Manager and other requirements systems enables this “requirements-based testing” approach as well.

TEST PLANNING

SilkCentral Test Manager lets you quickly create a test plan and easily associate test cases to the plan. One test plan can cover all types of tests for the platforms, environments and technologies to be tested, as well as all levels of testing. The plan can also



Project overview summary delivers the right information to the right people.

integrate both manual and automated unit, functional and load tests—providing a unified view of the overall test environment. As you grow with the system and store more test plans, tests and test data in SilkCentral, versioning and access control is provided through integration with the Borland StarTeam® solution.

TEST EXECUTION

SilkCentral Test Manager lets you schedule, establish dependencies and execute tests from a central Web console—even when testing activity is distributed across remote labs. You can simultaneously schedule and run multiple tests covering different configurations and environments in multiple locations. As each test is completed, results are stored in the central repository for shared, Web-based access. Regardless of test type, SilkCentral removes barriers to success:

- Unit testing:** One of the most critical and often ignored aspects of the test cycle is unit testing by development teams. SilkCentral Test Manager assists in assuring quality from the earliest stages by acknowledging this important testing phase with support of unit test management.

Borland® SilkCentral® Test Manager™

FEATURES AND BENEFITS (CONTINUED)

- **Manual testing:** Through a versatile manual testing client, testers on or offline, local or remote, are provided a step-by-step guide to individual tests to provide ease, consistency and unified reporting on manual testing efforts. No other test management solution addresses this complex process in this way.
- **Functional automation:** Integration with SilkTest®, Borland's renowned functional testing solution, provides a solid management framework for functional automation. Additionally, off-the-shelf connectors and interfaces allow the management of third-party or open-source automation tools as well, making SilkCentral Test Manager more versatile than less open test management solutions.
- **Performance testing:** Integrated with SilkPerformer® for load testing, SilkCentral delivers a powerful platform for execution and management of performance test and provides critical visibility into cross-project performance benchmarks, analysis and resource utilization.

MANAGEMENT OF TEST ENVIRONMENTS

Setup, administration and test assignment to physical or virtual test environments are time-consuming aspects of testing. Right out of the box, SilkCentral Test Manager streamlines administration and test assignment tasks on many different systems, configurations and platforms through its advanced scheduling and execution capabilities. With virtualization making such a positive impact on IT, SilkCentral Test Manager now delivers built-in support of VMware Lab Manager to revolutionize the testing process. For example, the selection, setup and tear-down of test environments can be automated, and QA and development teams can access the same test systems for defect resolution.

ISSUE MANAGEMENT

SilkCentral Test Manager includes a Web-based issue-tracking solution that automatically records defects, tracks their status, and monitors resolution. Requirements can be linked to a specific

defect, ensuring traceability throughout the application lifecycle, which helps with compliance and auditing. An easily customized process workflow allows consistent and efficient assignment of tasks and critical information to the right personnel, at the right time. If (and when) you want to leverage expanded capabilities of enterprise Software Configuration Management systems, SilkCentral is tightly integrated with Borland StarTeam as well as other popular defect-tracking systems.

BUILT FOR ENTERPRISE SCALABILITY

SilkCentral Test Manager is designed as a single platform to meet all your enterprise testing needs. It seamlessly integrates with Borland's capable Silk® testing tools, plus the open architecture can interface with other vendors' testing tools to provide one central point of control for the overall test environment. The SilkCentral open API enables you to extend the functionality to other defect-tracking, requirements and source control solutions.

CLEAR VISIBILITY INTO THE TESTING PROCESS

As the complexity of enterprise applications grows, so does the pressure to deliver them on time and on budget while meeting rigorous design specifications and quality requirements. With SilkCentral Test Manager, you can manage application quality and accelerate time to market—even when applications integrate diverse components, technologies and platforms across a global computing environment.

ADVANTAGES OF SILKCENTRAL TEST MANAGER

- Provides a versatile, open enterprise testing platform
- Supports all testing from development to user acceptance
- Leverages VMware for multi-configuration and cross-platform testing
- Links requirements to testing and testing to code
- Manages manual testing
- Maximizes efficiencies of globally distributed testing
- Delivers advanced reporting (powered by open-source BIRT)

SYSTEM REQUIREMENTS

Operating System

- Windows 2000 with Service Pack 4
- Windows XP with Service Pack 2
- Windows XP 64bit with Service Pack 1 (execution server only)
- Windows Server 2003 with Service Pack 1
- Windows Server 2003 with Service Pack 2
- Windows Vista Ultimate 32-Bit (execution server only)
- Localized versions of Windows 2000 and Windows XP (Simplified Chinese)

Database

- Microsoft SQL Server / MSDE 2000 with Service Pack 4
- Microsoft SQL Server / Express 2005 with Service Pack 2
- Oracle 9i
- Oracle 10g

Browser

- Internet Explorer 6.x
- Internet Explorer 7.0
- Firefox 2.0

Web server

- IIS 5
- IIS 6
- Borland standalone Web server (Tomcat)

Borland is the leading vendor of Open Application Lifecycle Management (ALM) solutions - open to customers' processes, tools and platforms - providing the flexibility to manage, measure and improve the software delivery process.